

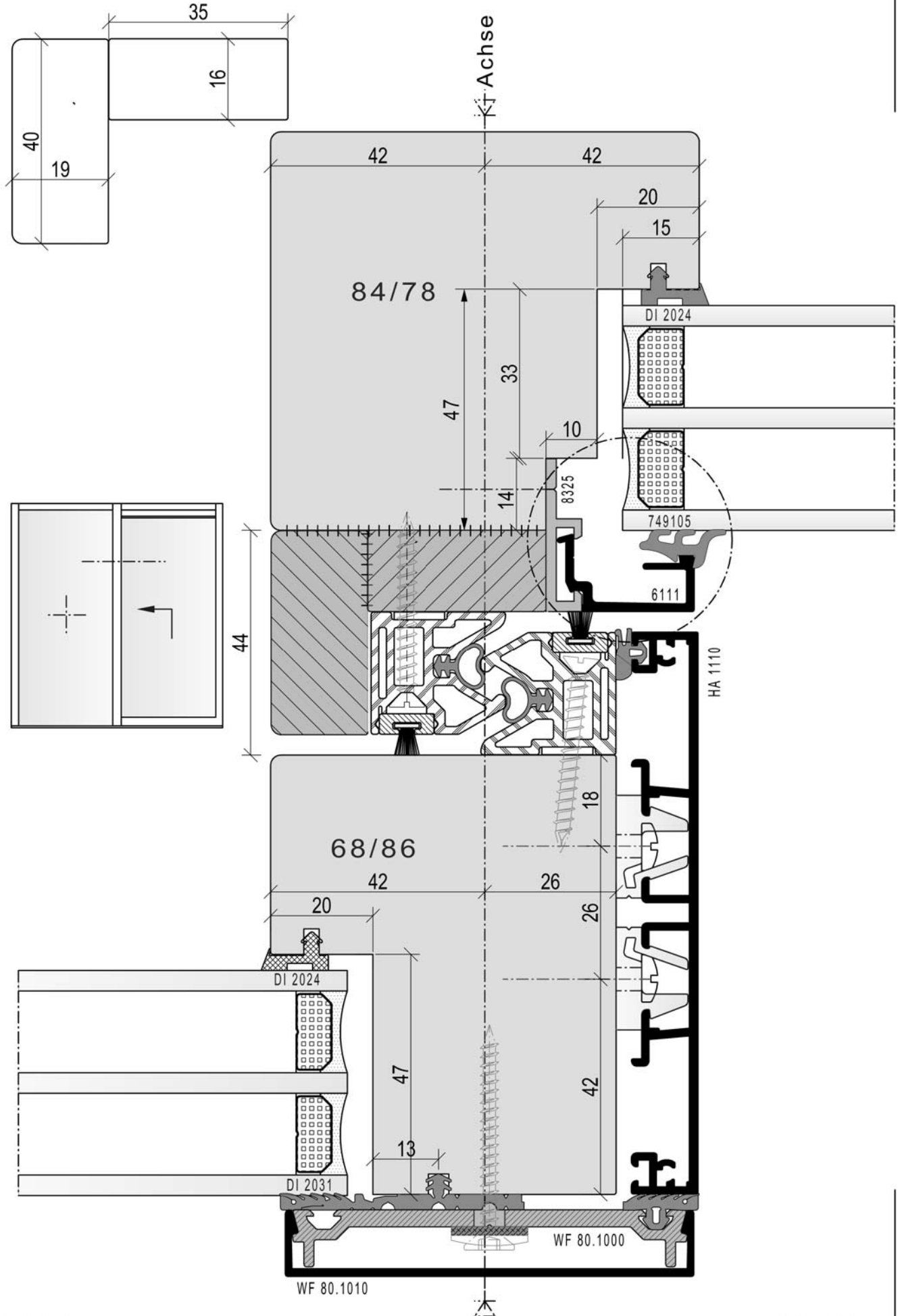
MS 1:1

HST-Rahmenzarge Festfeldseite

18-099



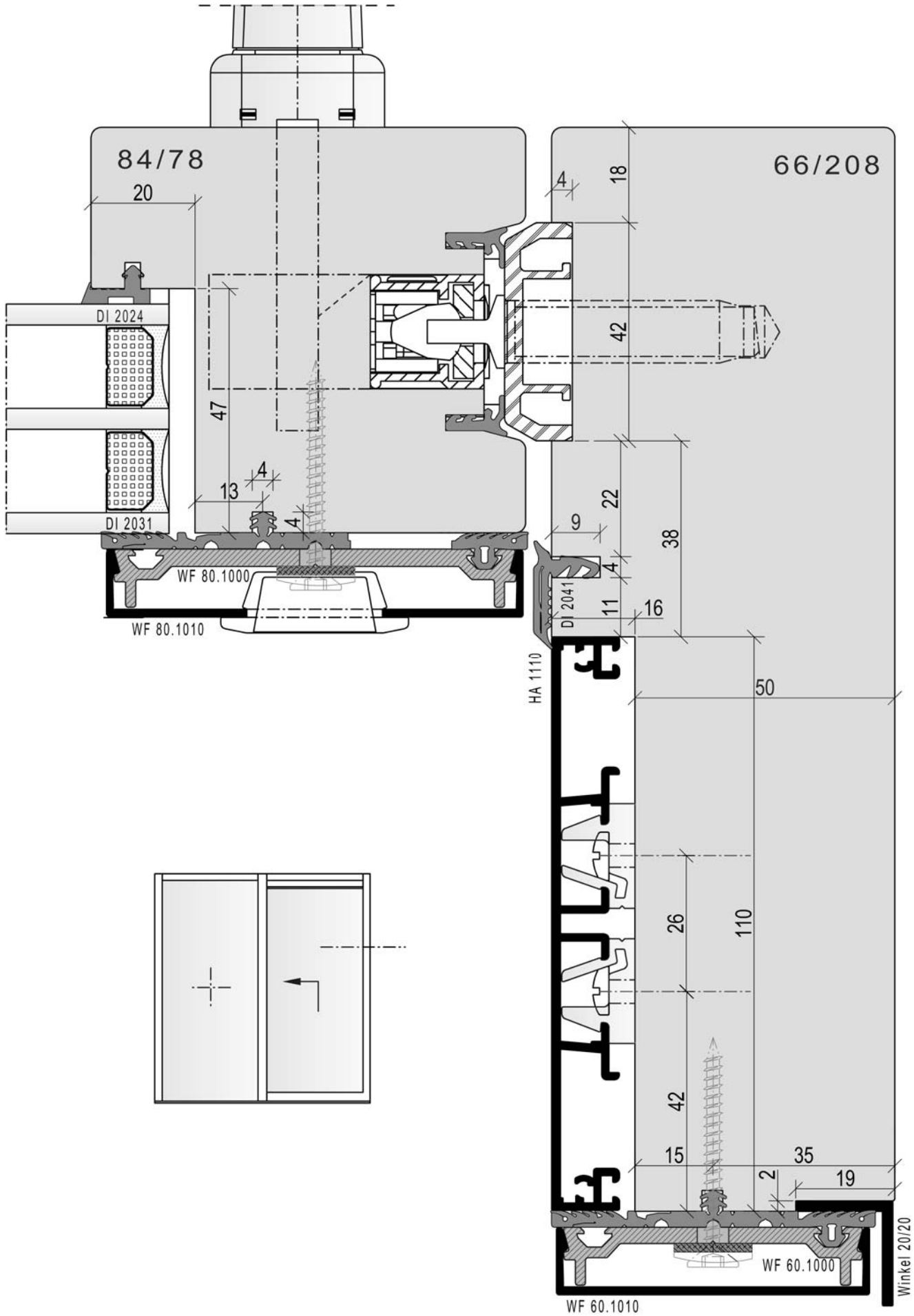
**STELZER
ALUTECHNIK GMBH**

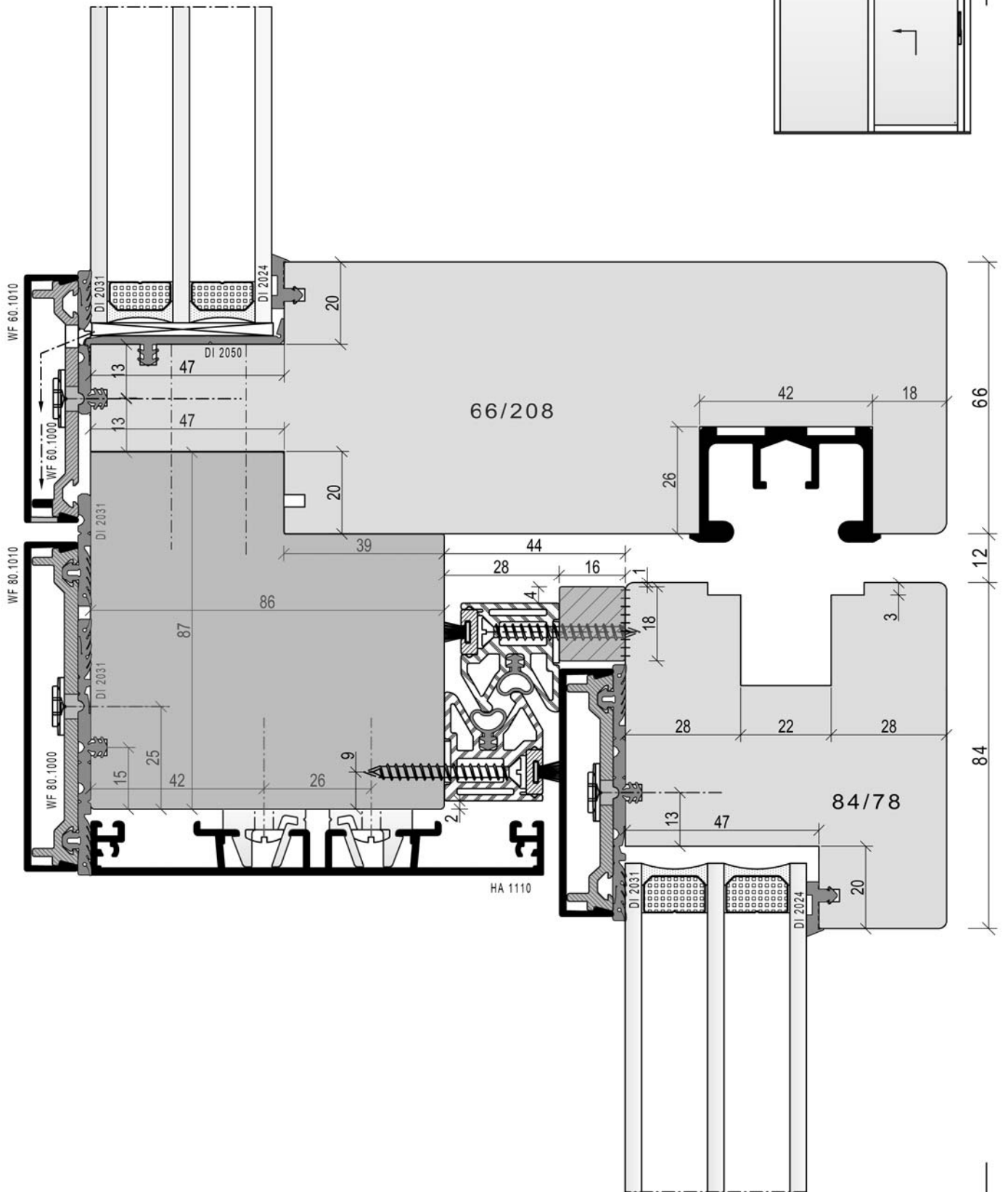


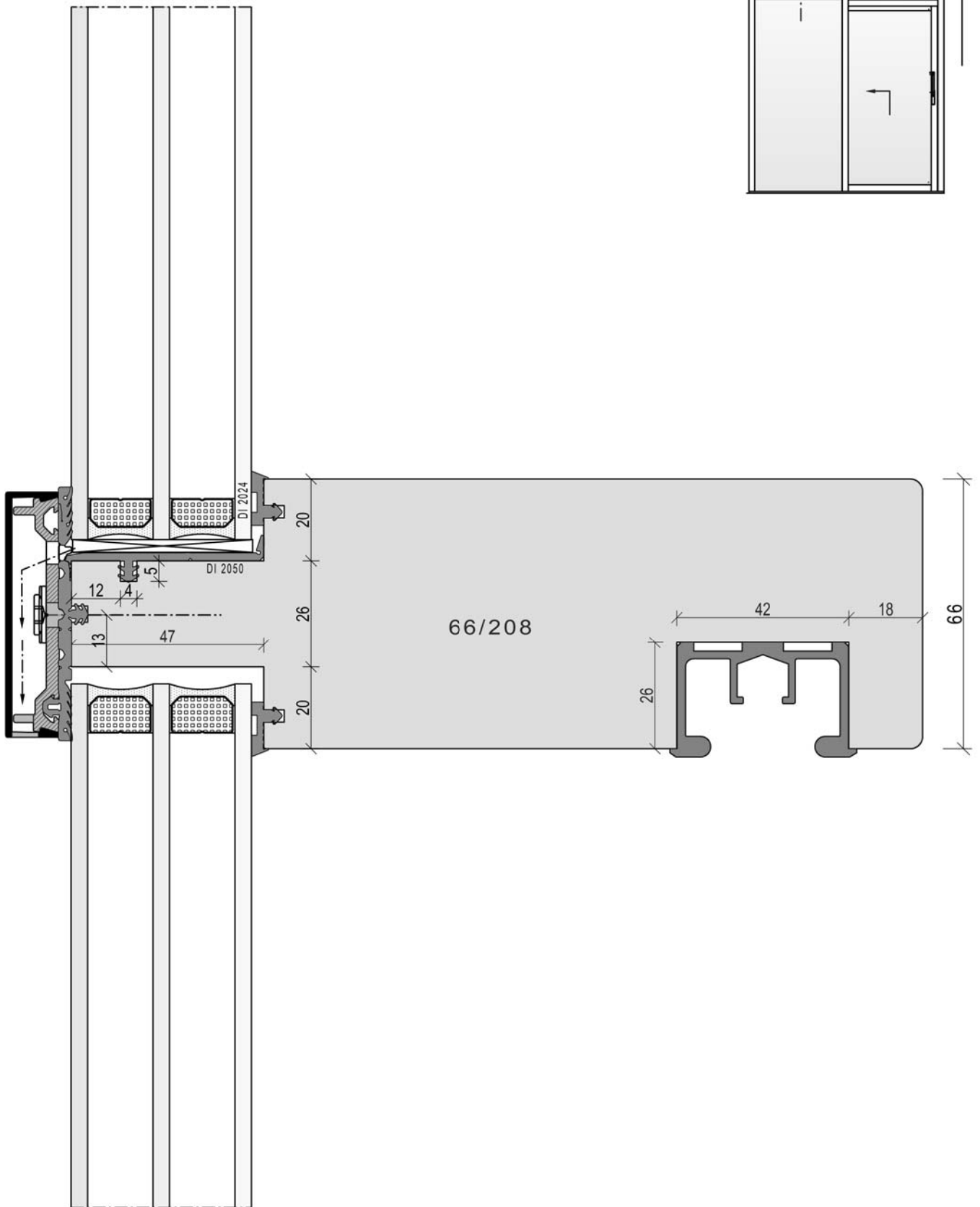
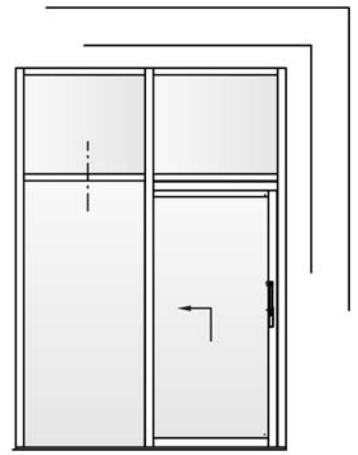
MS 1:1

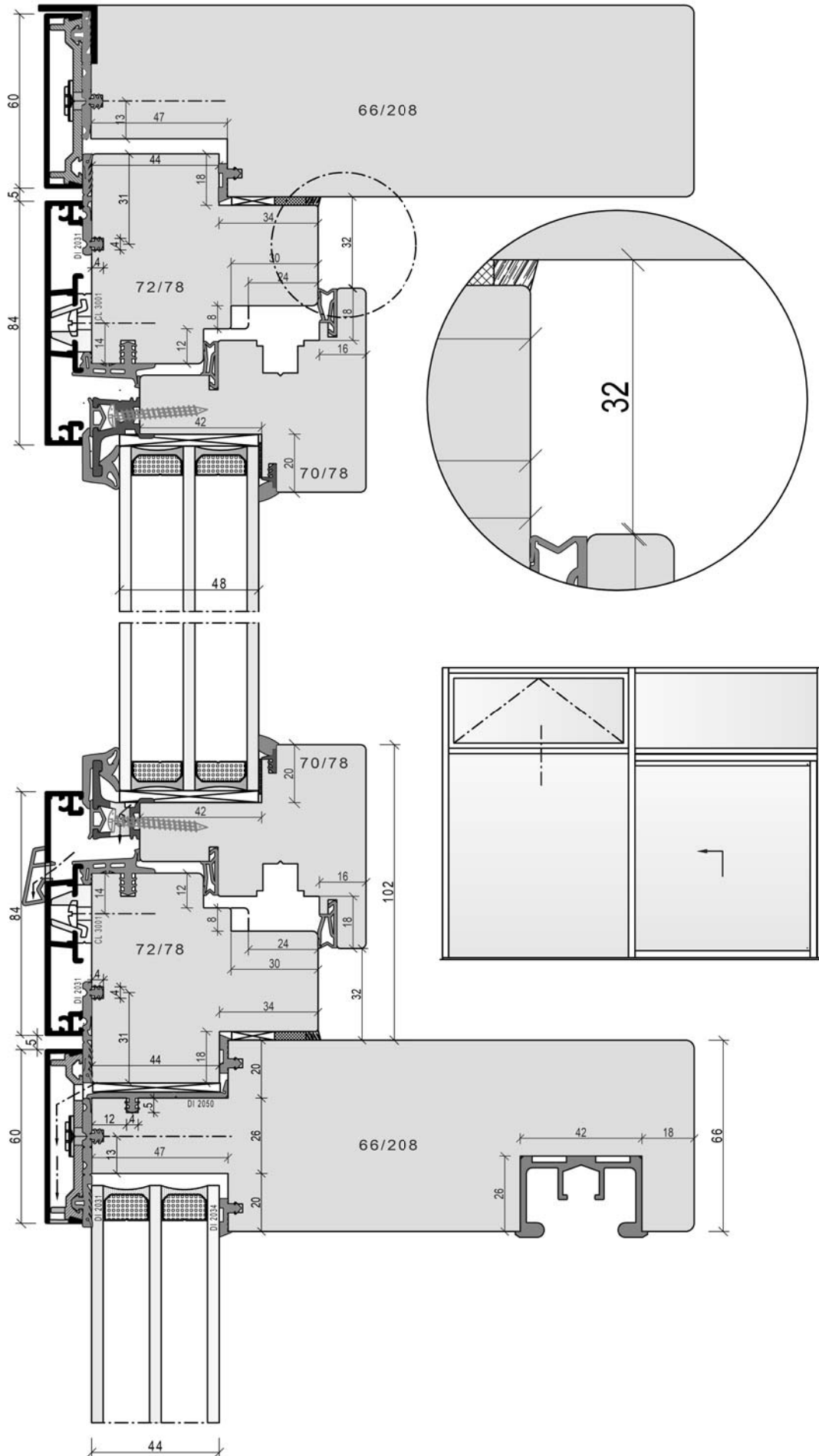
Mittelpartie Standard

18-101





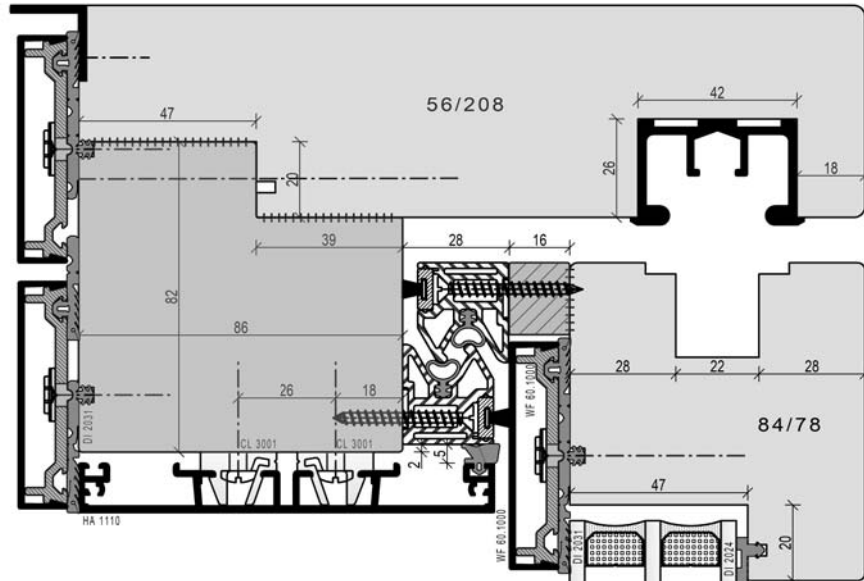
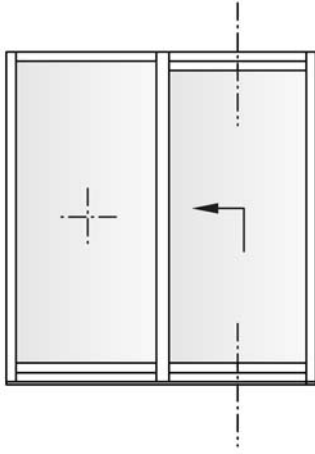




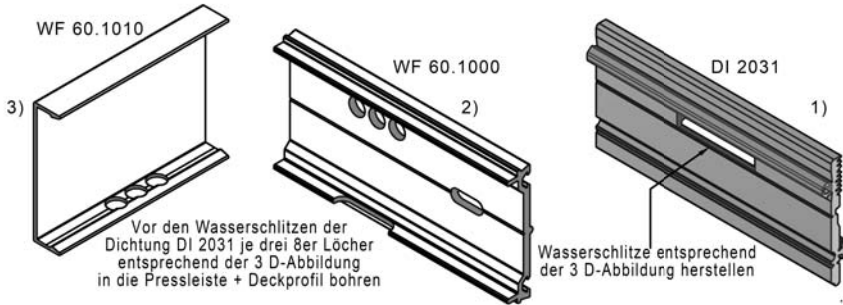
MS 1:2

Oberlicht-Kämpfer auf Festfeldseite
mit Kippfenster

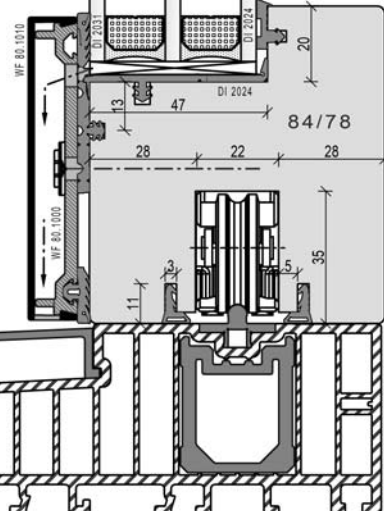
18-108

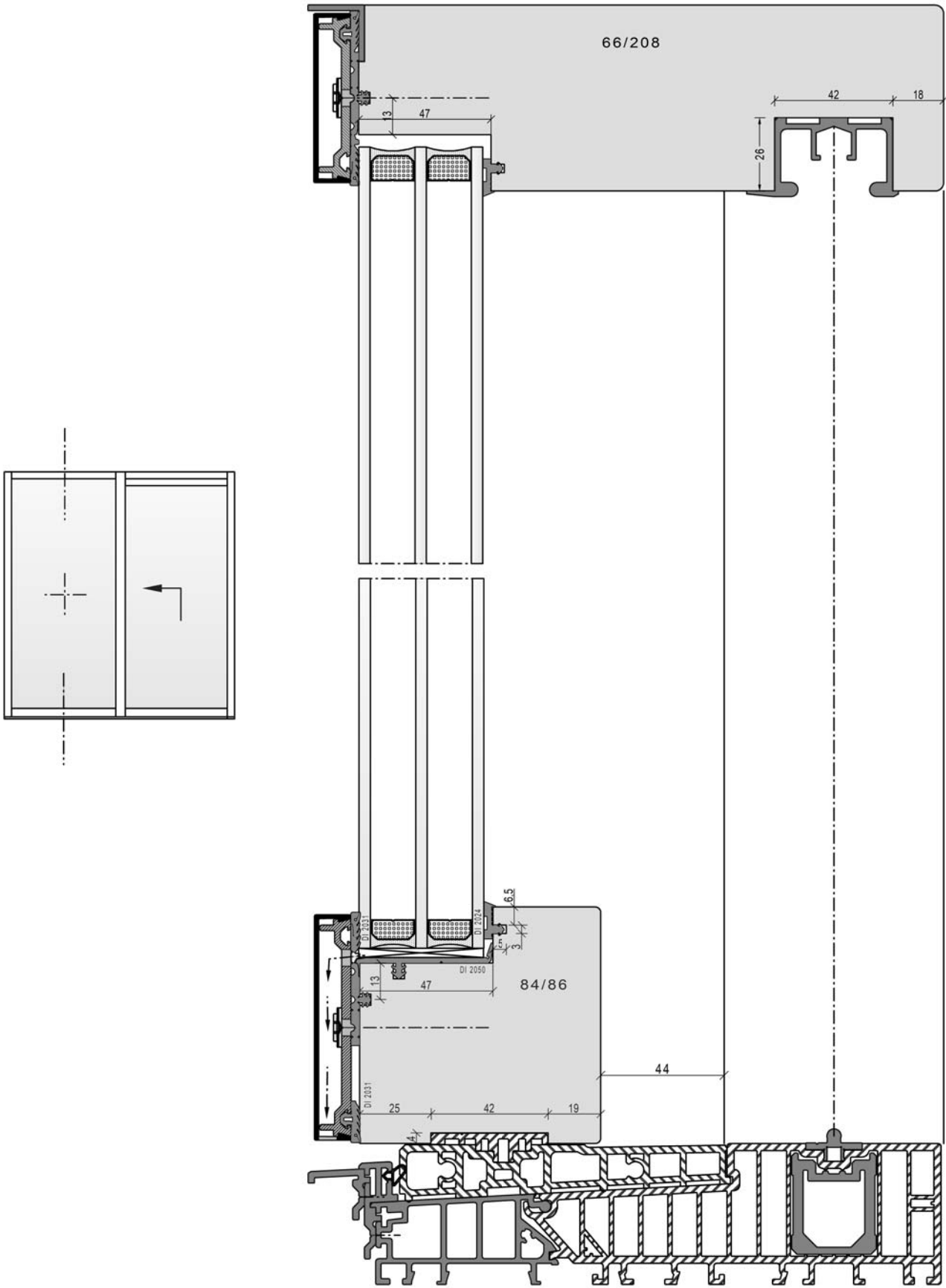


Siegenia Portal HS
ECO PASS



Bodenschwelle-Siegenia ECO PASS B 203
Verarbeitungsunterlagen von
Siegenia-Aubi anfordern

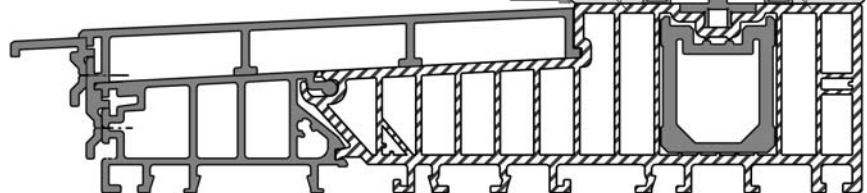
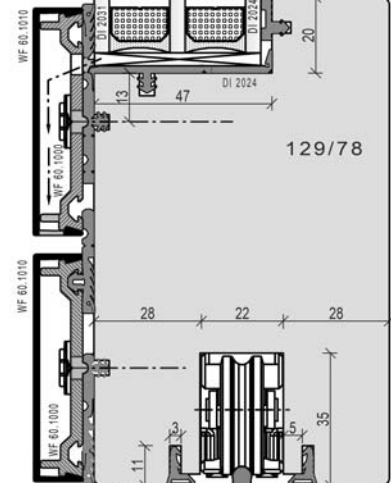
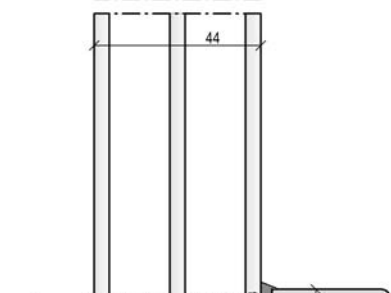
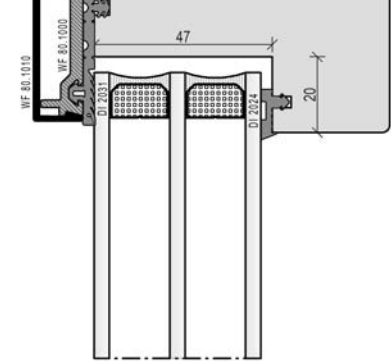
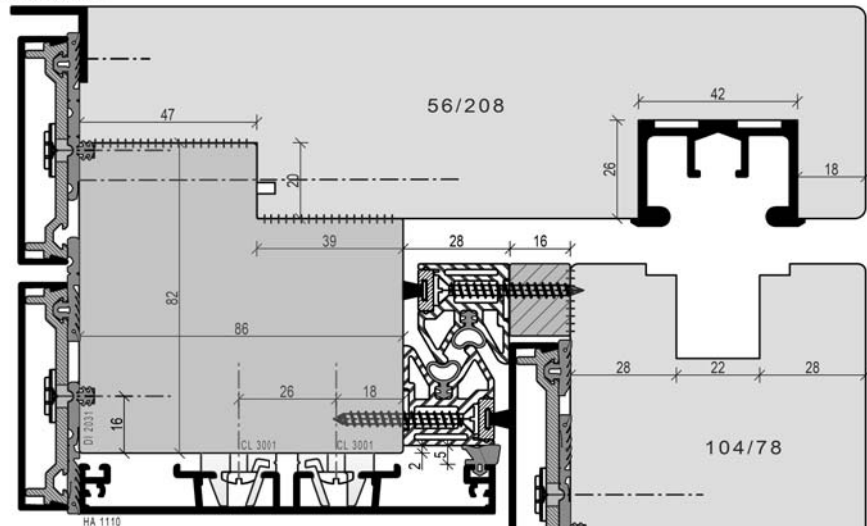
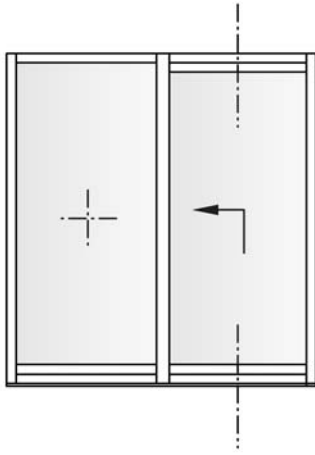




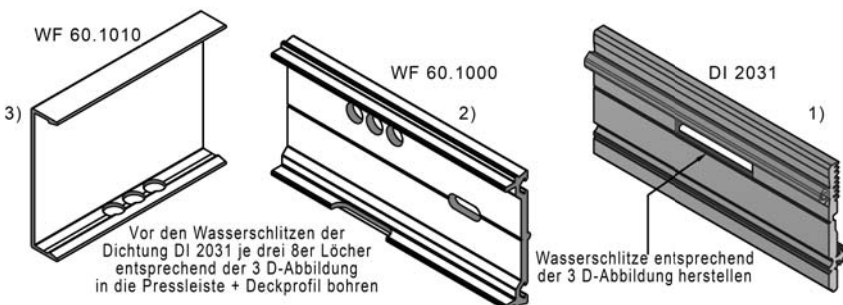
Bodenschwelle-Siegenia ECO PASS B 203



Winkel 20x2x2



Siegenia Portal HS
ECO PASS



Vor den Wasserschlitzen der Dichtung DI 2031 je drei 8er Löcher entsprechend der 3 D-Abbildung in die Pressleiste + Deckprofil bohren

Wasserschlitze entsprechend der 3 D-Abbildung herstellen

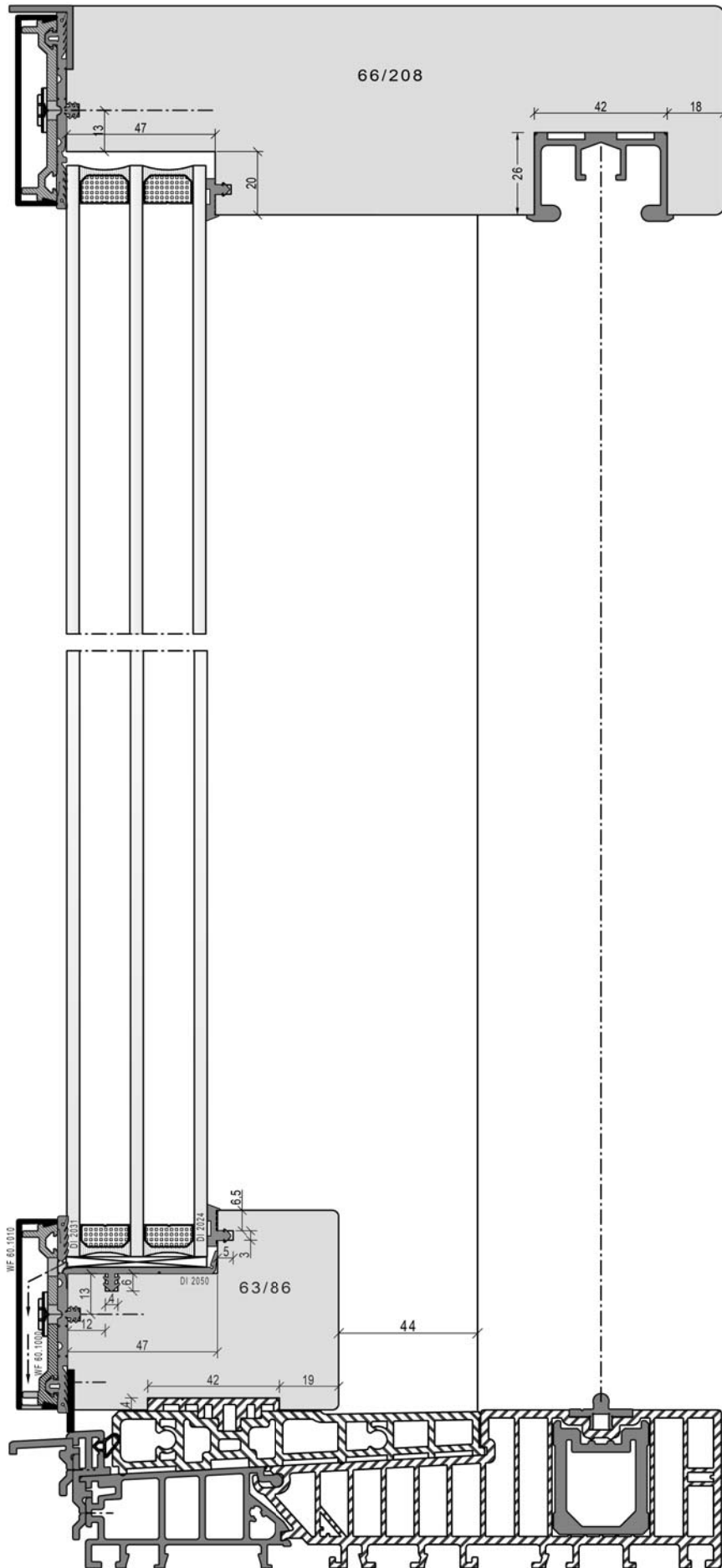
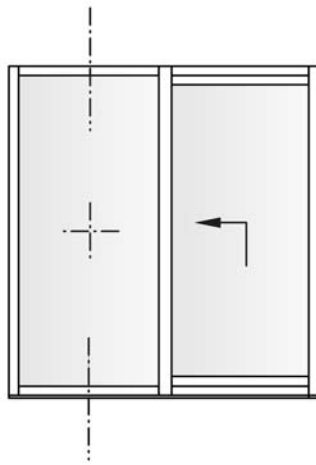
Verarbeitungsunterlagen von Siegenia-Aubi anfordern

Bodenschwelle-Siegenia ECO PASS B 203

Bodenschwelle Flügelseite mit breitem Sockel und breitem Flügelrahmen oben

MS 1:2

18-112

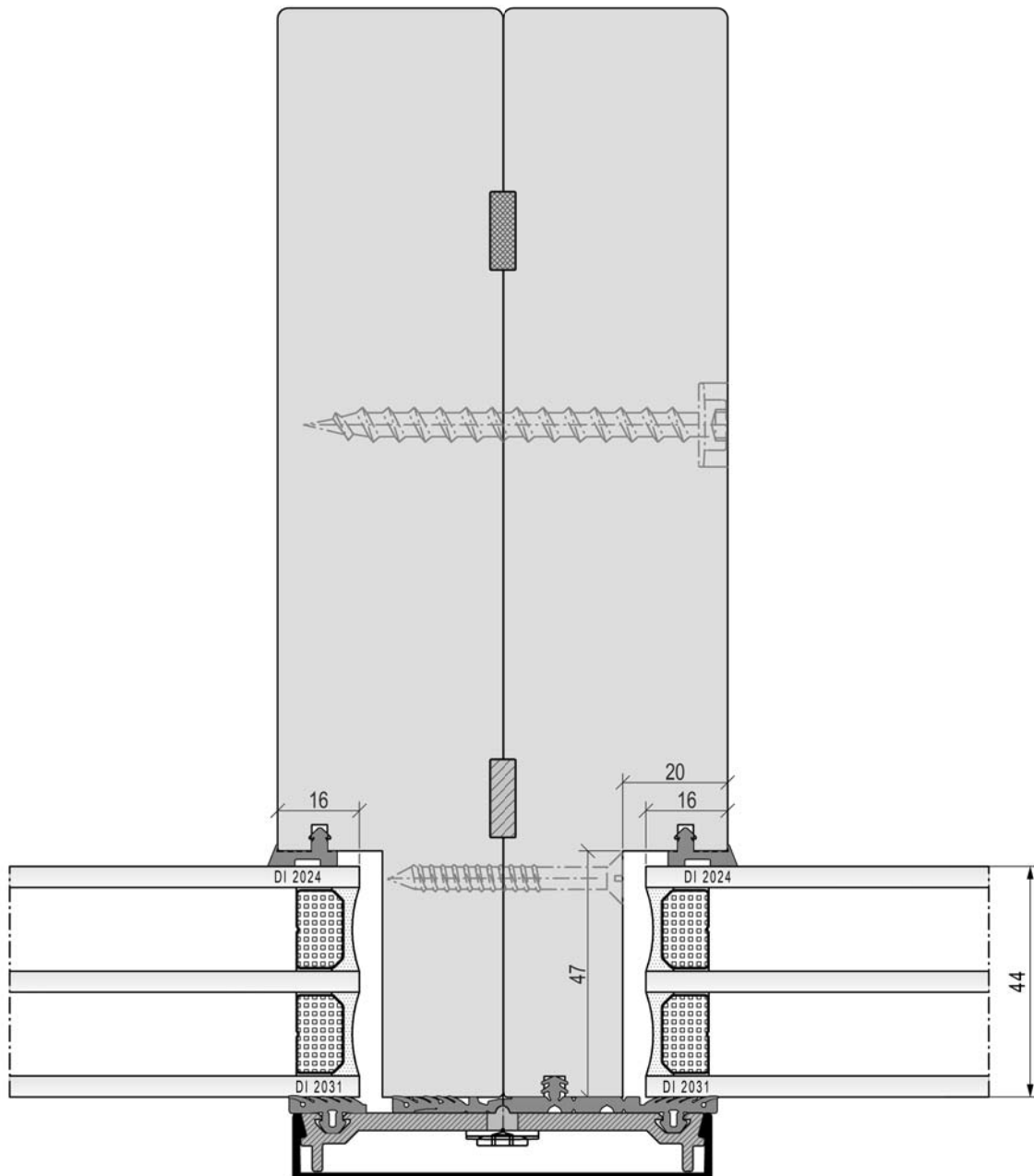
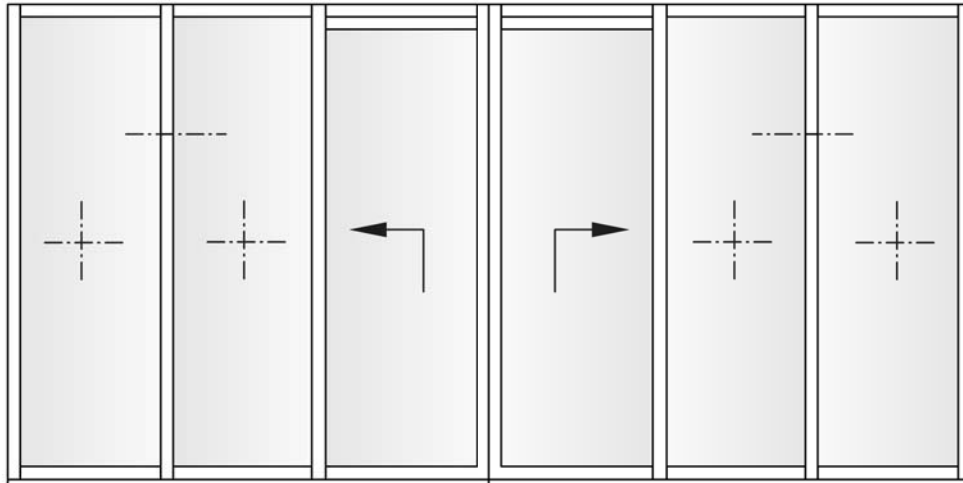


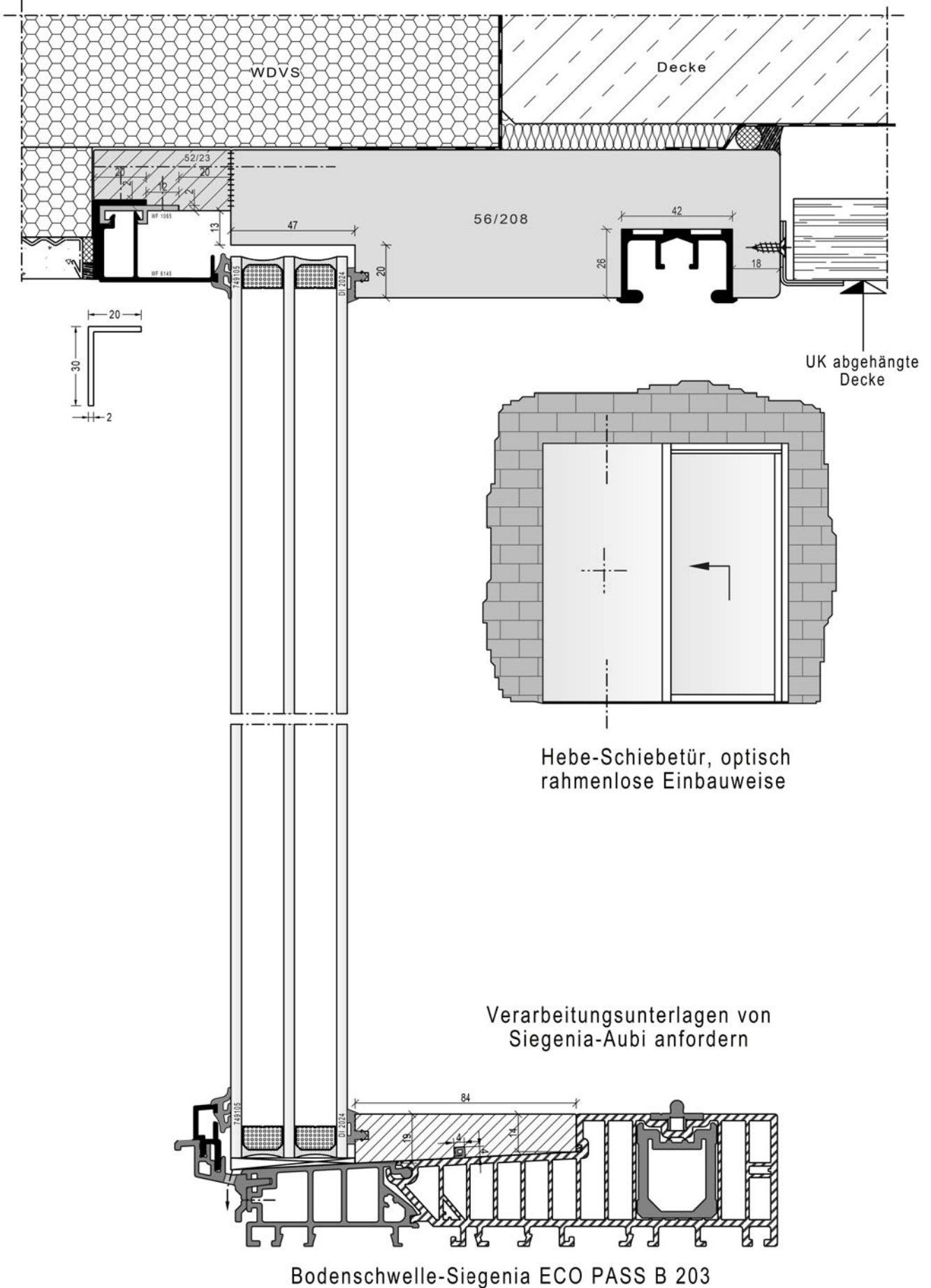
Bodenschwelle-Siegenia ECO PASS B 203

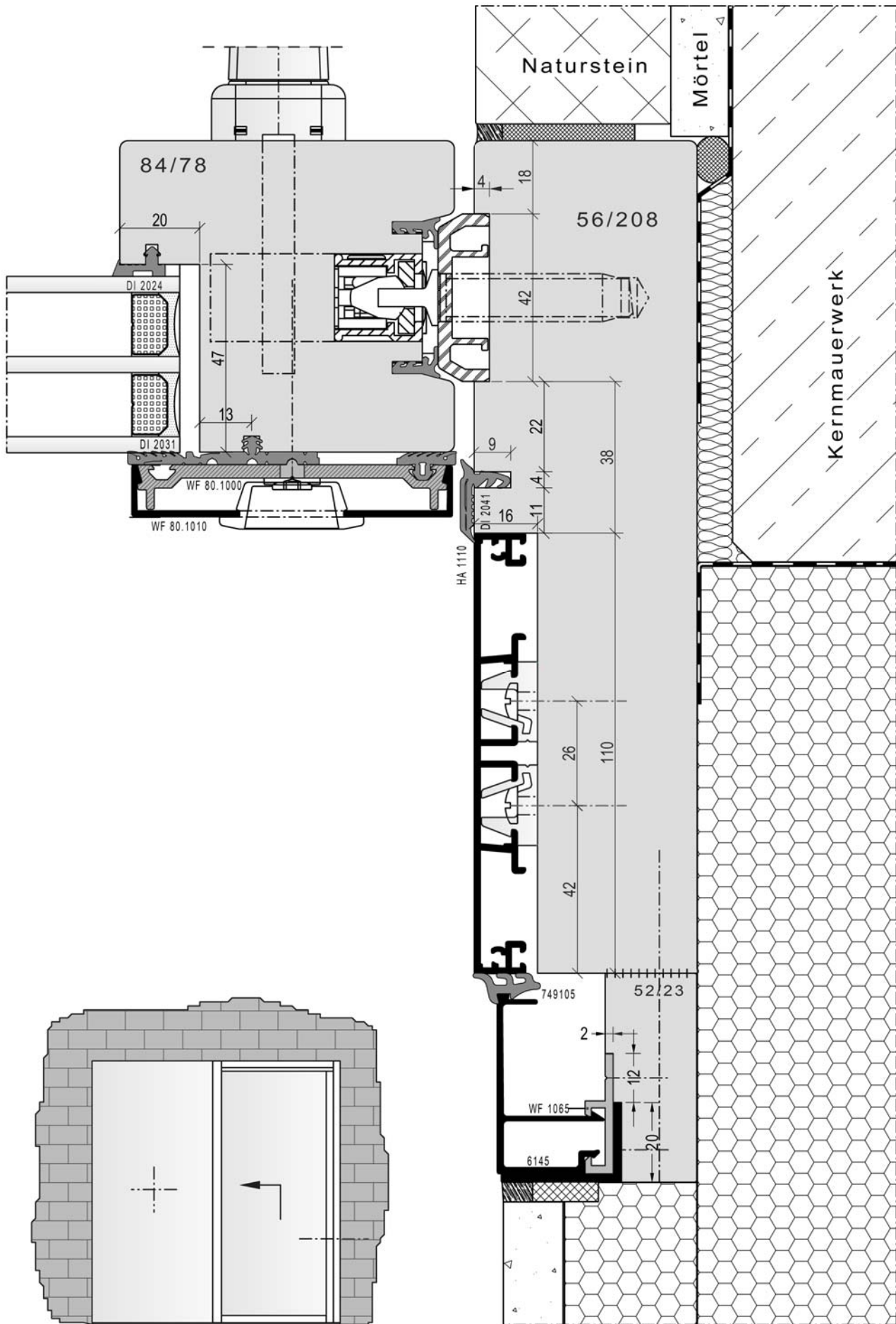
HST-Festfeldseite mit niedrigem Sockel

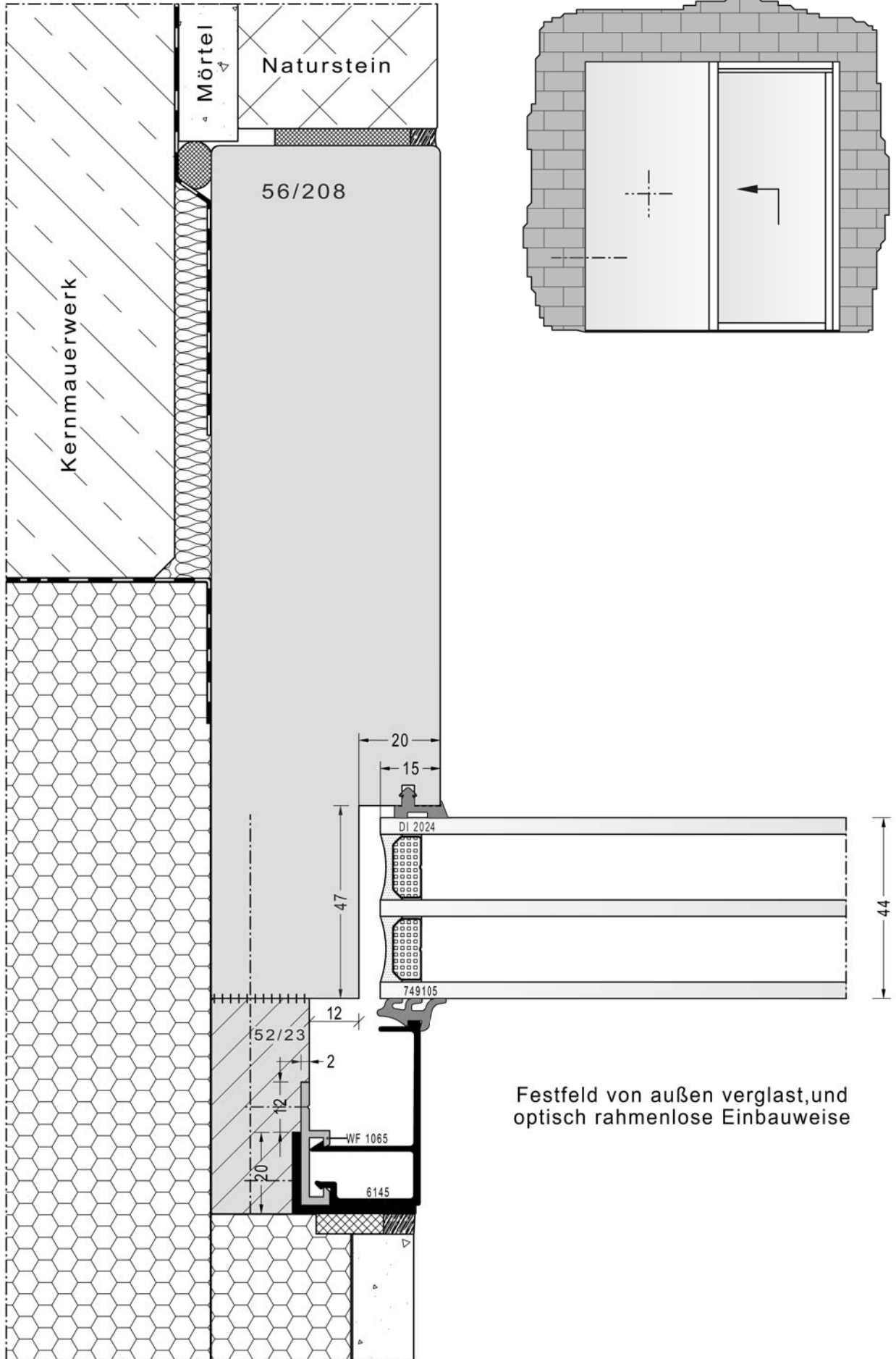
MS 1:2

18-113





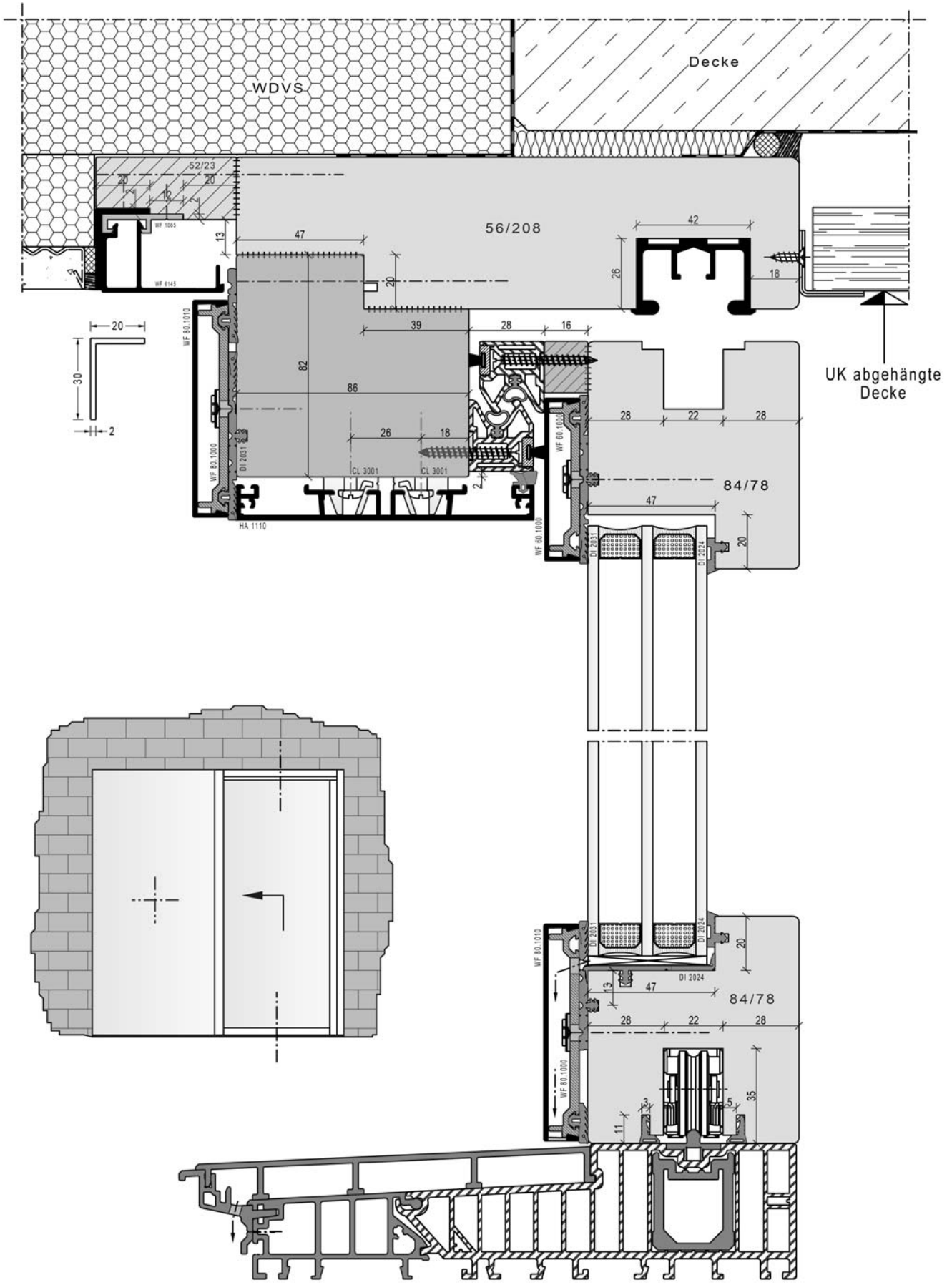




MS 1:1.33

Anschlussdetail Festfeldseite

18-117



Bodenschwelle-Siegenia ECO PASS B 203